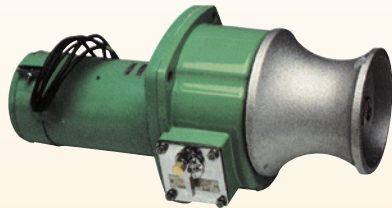


# FOR FISHERY INDUSTRY

## Light weight & Compact Most Suitable for Fishing Boats

### ■ Applications

- Winding anchor for boats
- Drawing fishing net
- Towing line
- Winding up basket

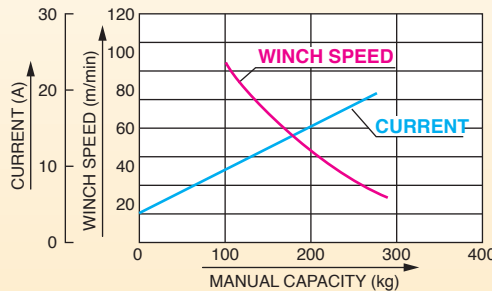


REL-2512



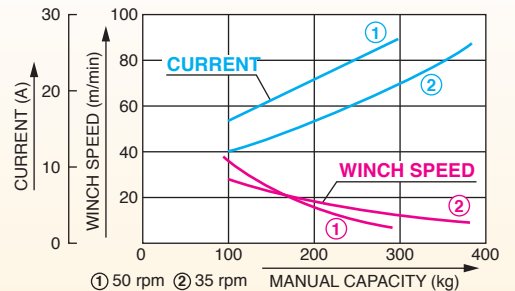
RES-2512

### • REL-2524 (250 W, 24 V Type)

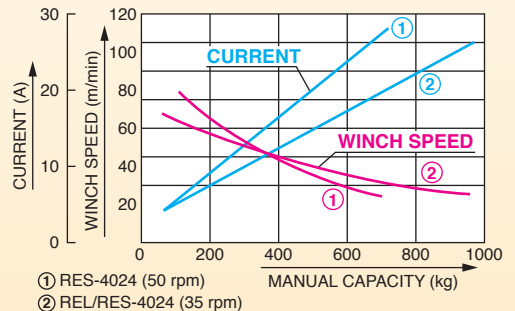


### ■ Performance Curve

#### • RES-2512, REL-2512 (250 W, 12 V Type)



#### • RES-4024, REL/RES-4024 (400 W, 24 V Type)



### ■ Specifications

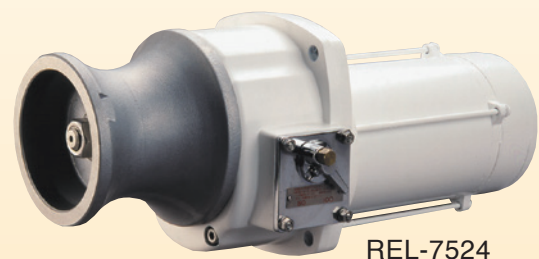
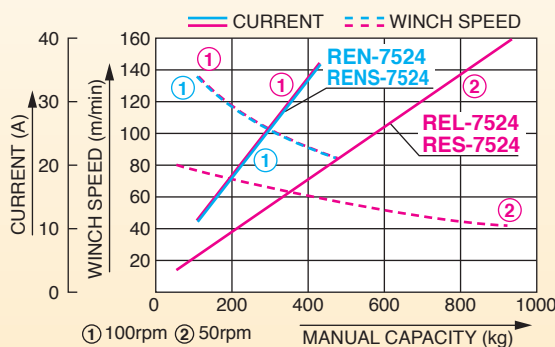
Model	RES-2512	REL-2512	REL-2524	RES-4024	REL-4024	RES-4024L	REL-4024L
Voltage	DC 12 V			DC 24 V			
Rated Current	30 A		30 A	25 A			
Motor Output	250 W			400 W			
Rating	1 h / 30 A		1 h / 30 A	1 h / 25 A			
Roller Revolution	50 rpm (Low), 100 rpm (High)		50 rpm (Low), 100 rpm (High)	50 rpm (Low), 100 rpm (High)		35 rpm (Low), 70 rpm (High)	
Manual Capacity	Max. 280 kg (Low), 140 kg (High), (90 A)		280 kg (Low), 140 kg (High)	700 kg (Low), 350 kg (High)		900 kg (Low), 450 kg (High)	
Capacity Rating	90 kg (Low), 45 kg (High), (30 A)		140 kg (15 A)	140 kg (Low), 70 kg (High), (25 A)		200 kg (Low), 100 kg (High), (25 A)	
Winch Speed (With 100 kg Load)	6 m/min (19 ft/min) (Low) 13 m/min (42 ft/min) (High)		23 m/min (75 ft/min)	20 m/min (65 ft/min) (Low) 33 m/min (108 ft/min) (High)		13 m/min (49 ft/min) (Low) 23 m/min (82 ft/min) (High)	
Standard Accessories	1 Cable Gland for Ship, 1 Waterproofing Plate, 1 Vertical Type Main Body Packing, 5 Crimping Terminals, 1 Connection Terminal						
Net Weight	—		—	—		—	
Gross Weight	18.5 kg (40.7 lbs)	15 kg (33 lbs)	19.5 kg (42.9 lbs)	24.2 kg (53.3 lbs)	20.5 kg (45 lbs)	24 kg (53 lbs)	20.5 kg (45 lbs)
Dimensions LxWxH (mm)	560x240x280	468x235x270	469x237x255	560x240x280	469x237x255	560x265x270	469x237x255
Packing Unit	1						

# High Speed & High Load Rolling Up Max. Winch Up Power 900 kg

- Use magnet motor. Simple wiring and easy to switch direction between clockwise to counterclockwise.
- Approx. 25 % more power from usual 400 W type by high speed and high load rolling up.
- 2 stage switchable winch capacity (REL, RES).  
Switch to 900 kg / 50 rpm and 450 kg / 100 rpm by gearshift.
- Motor case, Roller, etc are made of aluminum alloy.  
Light, compact, sea water proof and no rust damage to FRP boat.
- Polyurethane coat protects corrosion perfectly.



## Performance Curve



## Specifications

Model	REN-7524	RENS-7524	REL-7524	RES-7524
Voltage	DC 24 V			
Rated Current	43 A			
Motor Output	750 W			
Rating	1 h / 43 A			
Roller Revolution	100 rpm		50 rpm (Low), 100 rpm (High)	
Manual Capacity	450 kg (150 A)		900 kg (Low), 450 kg (High), (150 A)	
Capacity Rating	110 kg (43 A)		220 kg (Low), 110 kg (High), (43 A)	
Winch Speed	33 m/min (108 ft/min)		17 m/min (55 ft/min) (Low), 33 m/min (108 ft/min) (High)	
Standard Accessories (RES, REN Type Only)	1 Cable Gland For Ship, 1 Waterproofing Plate, 1 Vertical Type Main Body Packing, 2 Crimping Terminals			
Net Weight	20.5 kg (45 lbs)	30.5 kg (67 lbs)	19.5 kg (43 lbs)	25 kg (55 lbs)
Gross Weight	25 kg (55 lbs)	35 kg (77 lbs)	24 kg (53 lbs)	30.5 kg (67 lbs)
Dimensions LxWxH (mm)	500 × 270 × 275	575 × 305 × 315	510 × 270 × 255	560 × 265 × 270
Packing Unit	1			

# Effective Electromagnetic Brake Model

- Motor case is made of corrosion resistance aluminum alloy to withstand seawater.
- Possible to stop instantly.

## Applications

- Winding anchor for boats
- Drawing fishing net
- Towing line
- Winding up basket



REL-5524LB



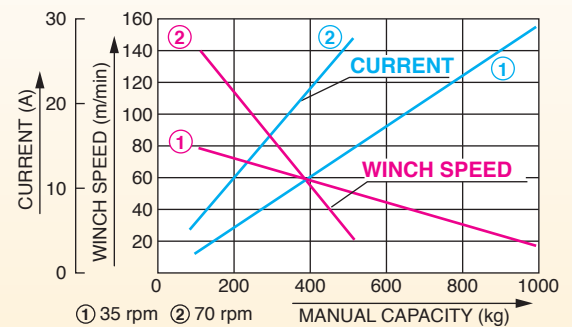
RES-5524LB

## Specifications

Model		RES-5524LB	REL-5524LB
Voltage		DC 24 V	
Rated Current		31 A	
Motor Output		550 W	
Rating		1 h / 31 A	
Roller Revolution		35 rpm (Low), 70 rpm (High)	
Manual Capacity	Max.	1000 kg (Low), 500 kg (High)	
	Rating	280 kg (Low), 140 kg (High)	
Winch Speed (With 100 kg Load)		13 m/min (42 ft/min) (Low) 23 m/min (75 ft/min) (High)	
Electromagnetic Brake	Static Friction Torque	4 N·m (0.4 kgf·m)	
	Rated Voltage	DC 24 V	
	Rated Capacity	15 W	
Standard Accessories		1 Waterproofing Plate, 1 Vertical Type Main Body Packing, 5 Machine Screws M5×20	
Net Weight		30 kg (66 lbs)	24 kg (53 lbs)
Gross Weight		30 kg (66 lbs)	
Dimensions L×W×H (mm)		583 × 320 × 340	540 × 248 × 278
Packing Unit		1	

## Performance Curve

• RES-5524LB, REL-5524LB (550 W, 24 V Type)



## ECARL BOX Just Changing Box Makes Your ECARL New

Example:  
REL+REF



**RES-330A**  
Suitable model:  
• All REL model



**RES-330B**  
with 3-button switch  
Suitable model:  
• All REL model



**REF-300**  
Suitable model:  
• REL-2512  
• REL-2524  
• REL-4024  
• REL-4024L



**REF-330**  
Suitable model:  
• All REL model



**3-button switch**  
Suitable model:  
• RES-330B  
• Attached to REF-330